

linguistic atlas of central romani

viktor.elsik@ff.cuni.cz

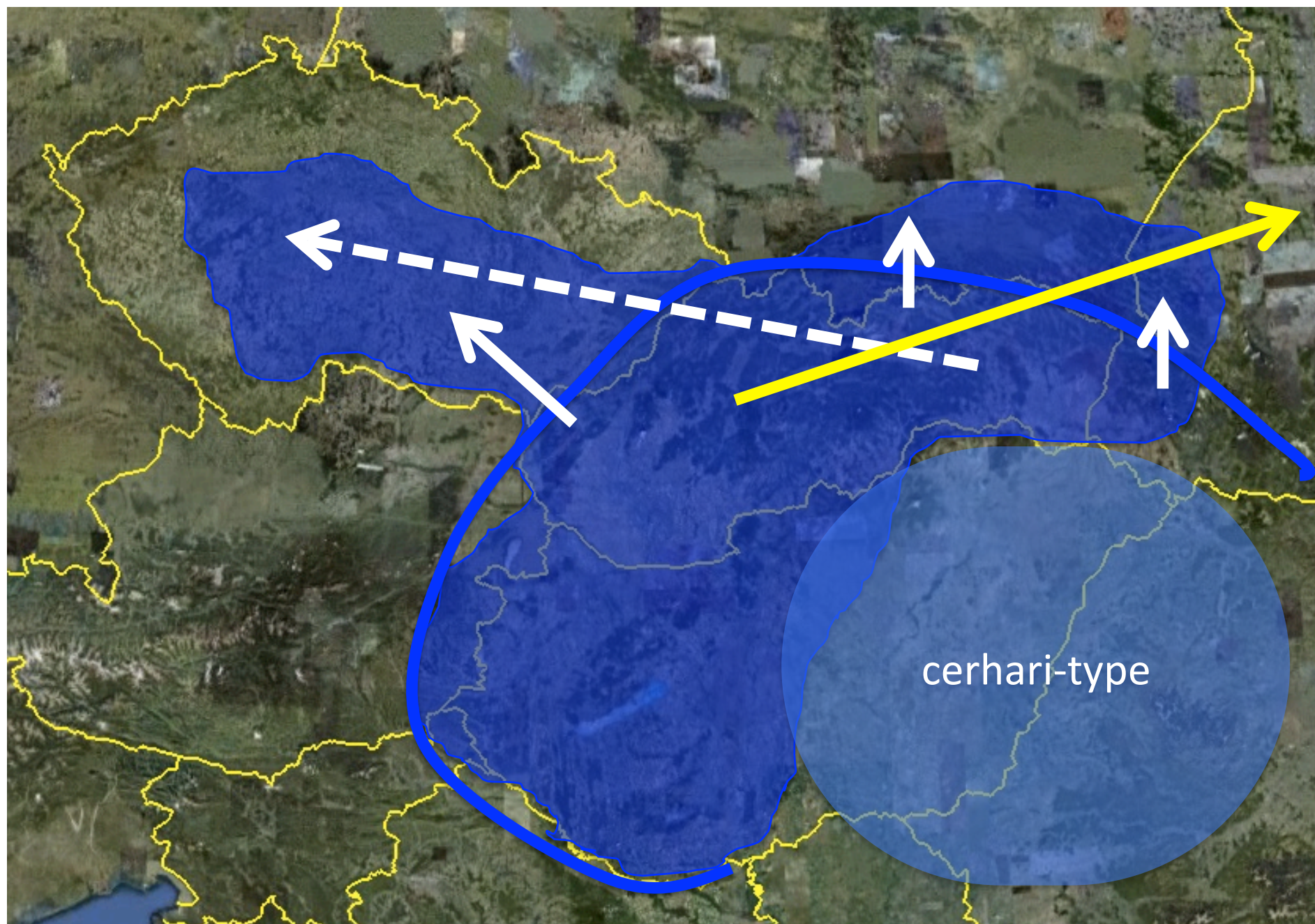
2011 annual meeting of gls

context of the project

- since 1990 descriptive boom
- since 1998 databases RMS + ROMLEX
- since 2001 questionnaire elicitation (RMS)

- 2008–10 documentation of central european (central, vlax, sinti) romani
- 2011–13 linguistic atlas of central romani

central romani

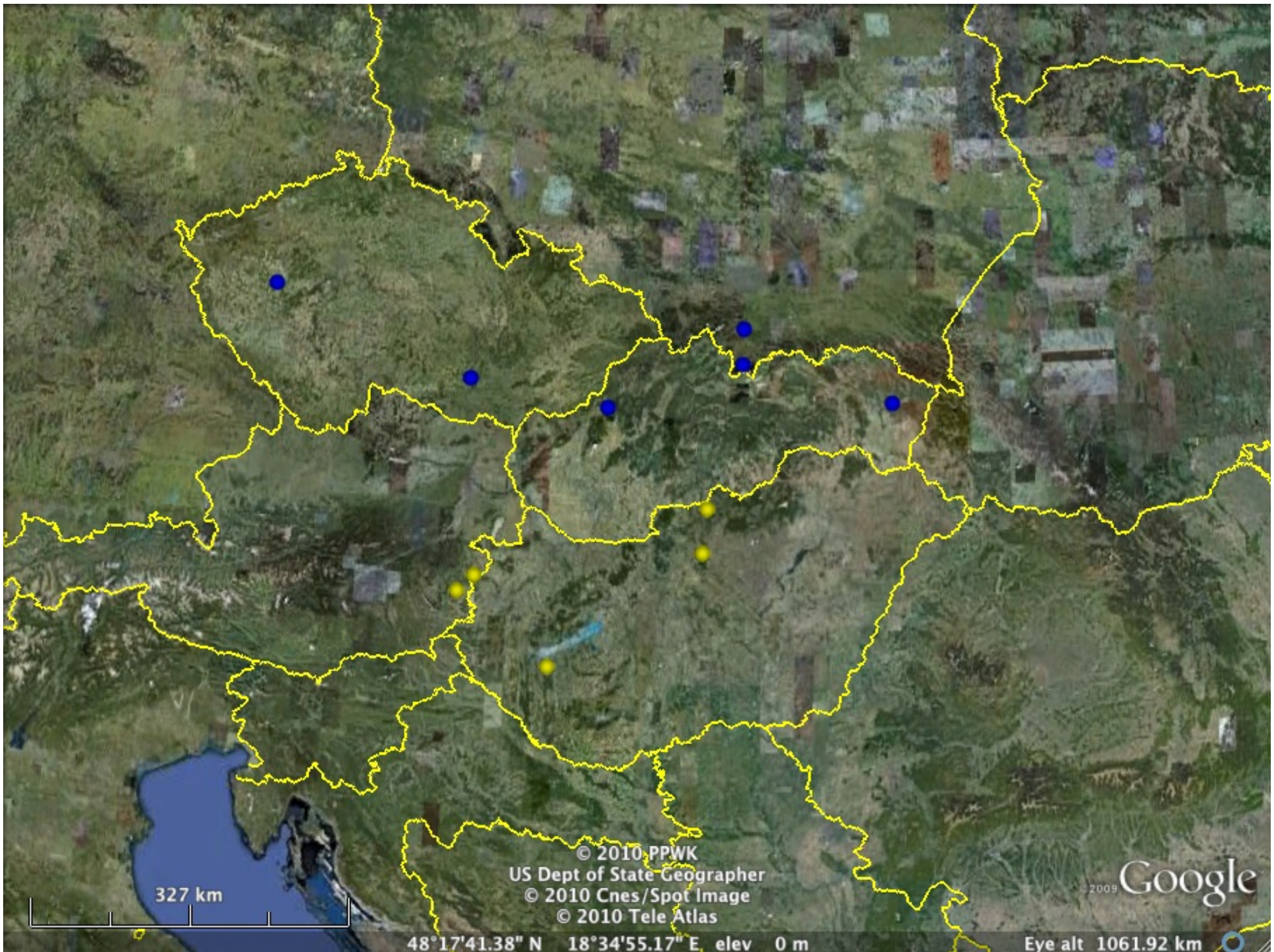


central romani



previous documentation

- 5 reliable **grammars** (1821, 1853, 1877, 1963 – textbook, 1998)
- 6 reliable **dictionaries** (1821, 1878-81, 1936, 1983, 1991 – interdialectal, 1998)
- 5 extensive **text collections** (1889, 1921, 1941, 1985, 1998)



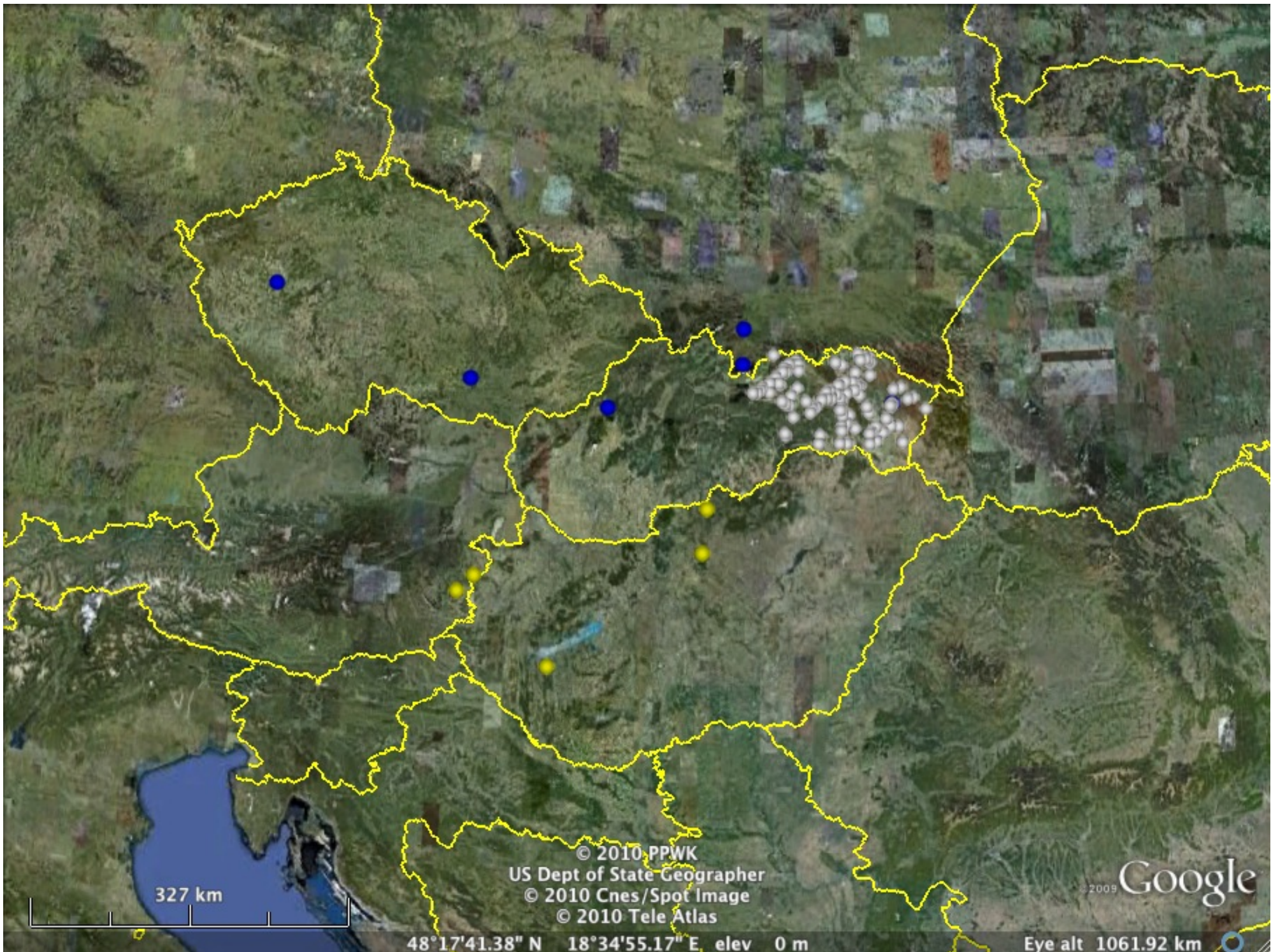
327 km

© 2010 PPWK
US Dept of State Geographer
© 2010 Cnes/Spot Image
© 2010 Tele Atlas

2009 Google

48°17'41.38" N 18°34'55.17" E elev 0 m

Eye alt 1061.92 km



327 km

© 2010 PPWK
US Dept of State Geographer
© 2010 Cnes/Spot Image
© 2010 Tele Atlas

2009 Google

48°17'41.38" N 18°34'55.17" E elev 0 m

Eye alt 1061.92 km

sources of data

1. audio-recordings of **elicited** speech
2. audio-recordings of **spontaneous** speech
(narratives, conversations etc.)
3. **published** sources
 - grammatical descriptions
 - lexical descriptions
 - text collections

fieldwork

- short field trips
- questionnaire elicitation in a number of local varieties of romani
 - extensive but relatively superficial documentation
 - highly economical method
 - basic description of the sociolinguistic situation
 - naturalistic texts

linguistic questionnaire

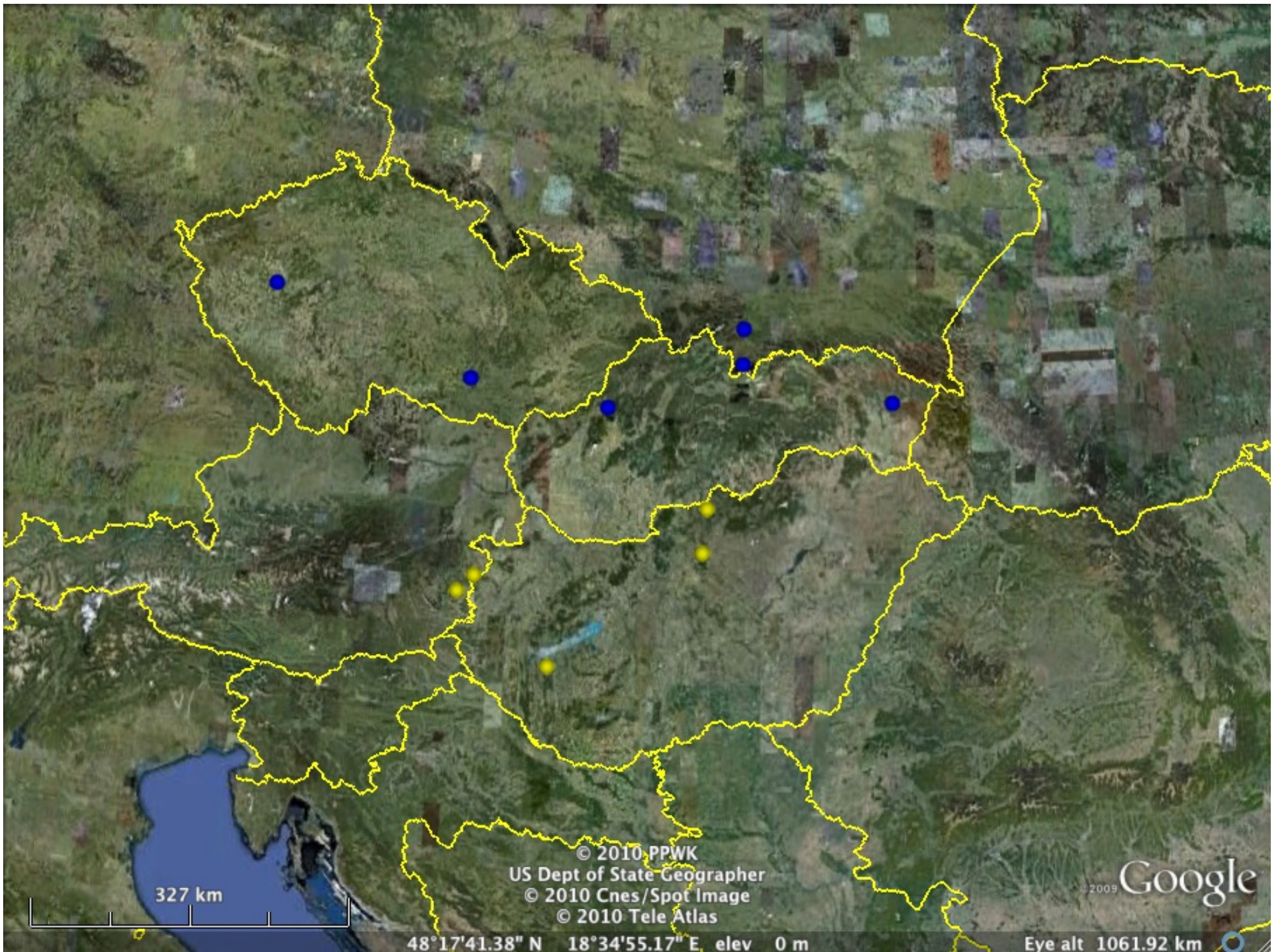
- lqcr = *linguistic questionnaire for the documentation of central european romani* (2008–)
 - partly derives from *RMS* questionnaire (Matras *et al.* 2001)
 - 1500 sentences
 - covers all essential grammatical structures & extended basic vocabulary
 - several lg. mutations

linguistic questionnaire

- lexicon
 - cca. 1900 lexemes per variety
 - basic vocabulary
 - targets all etymons with a meaning reconstructable for early romani
 - selected semantic fields (modern life etc.)

quantification

- 25 researchers, 11 regular ones, 4 core ones
- ca. 450 days spent in the field
- ca. 1500 hours of recordings (elicitation)
- ca. 320,000 transcribed questionnaire sentences
- ca. 450 idiolects documented
- ca. 300 local varieties documented



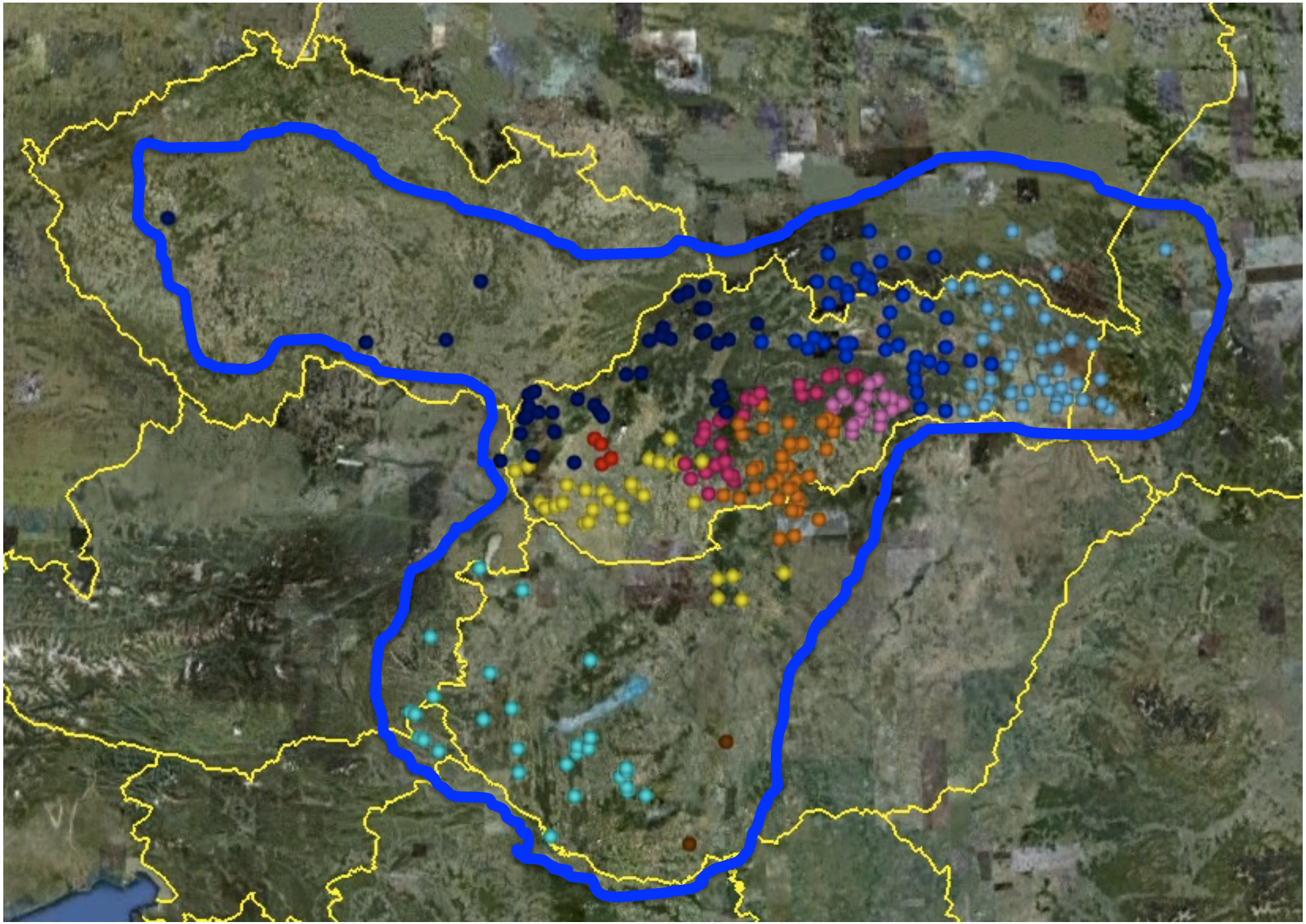
327 km

© 2010 PPWK
US Dept of State Geographer
© 2010 Cnes/Spot Image
© 2010 Tele Atlas

2009 Google

48°17'41.38" N 18°34'55.17" E elev 0 m

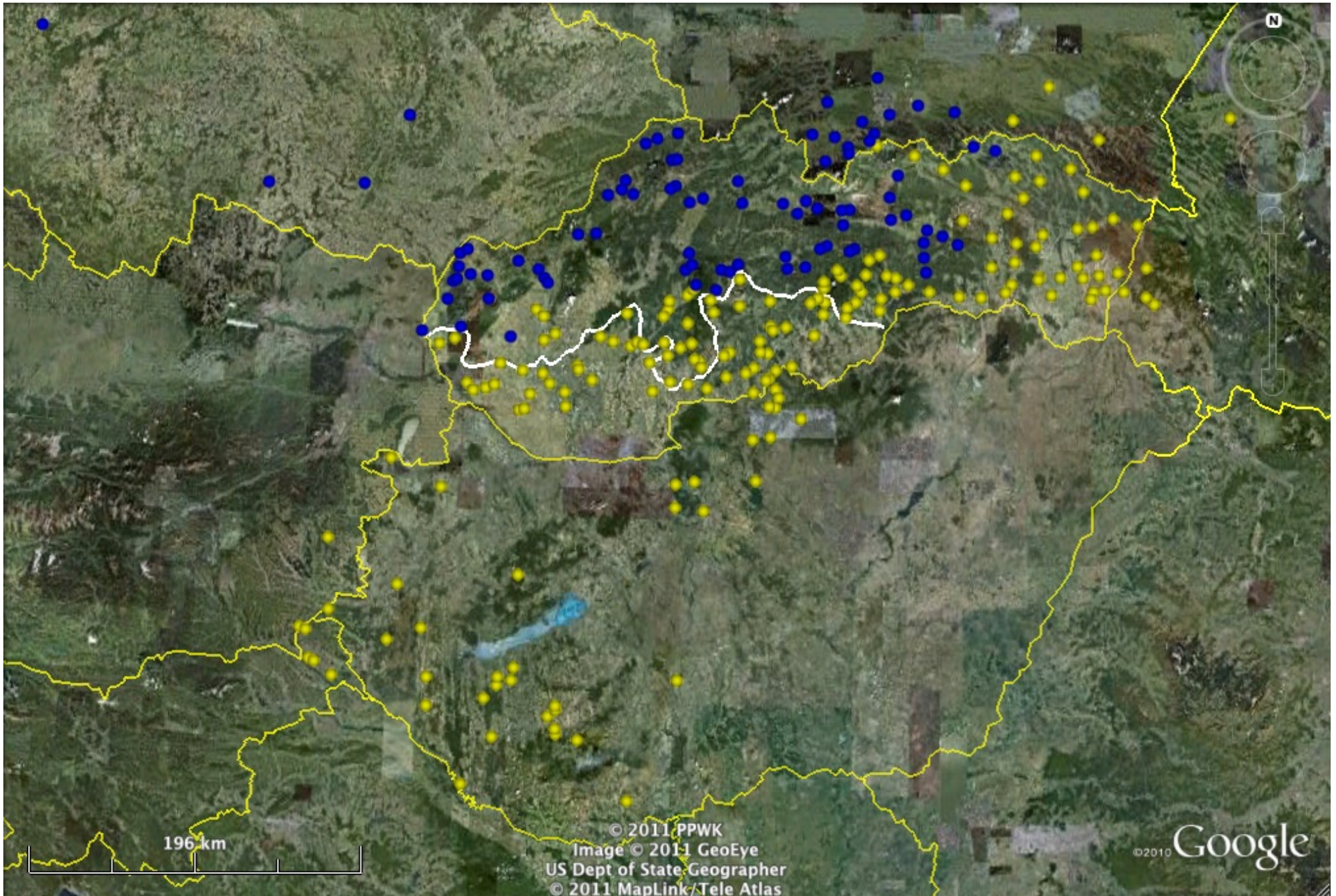
Eye alt 1061.92 km



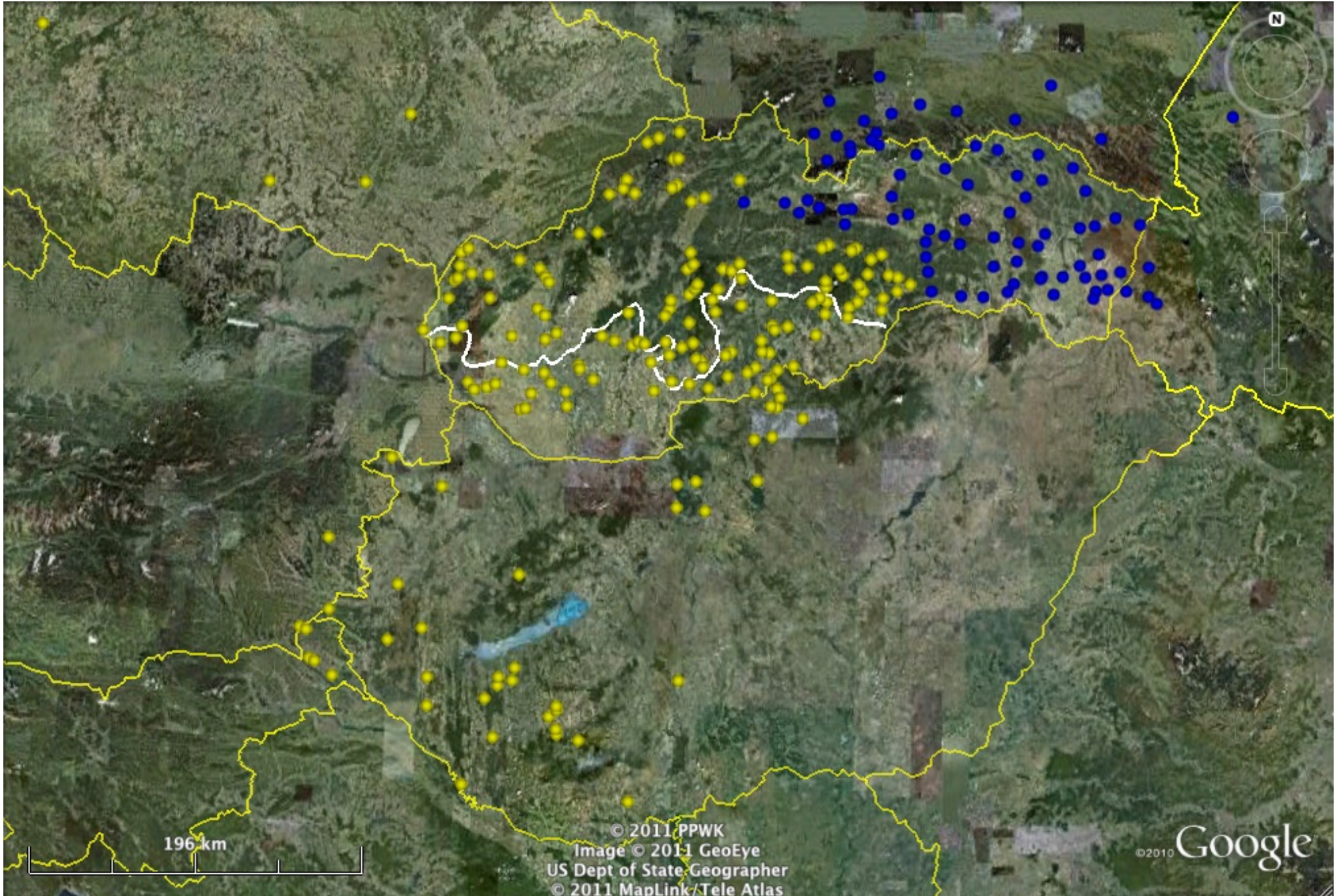
linguistic features

- all levels of language structure and use:
 - lexicon
 - phonology
 - morphology
 - syntax
 - semantics
 - pragmatics
- ca. 500 phonological and grammatical features
- ca. 700 lexical and semantic features

yesterday



initial /a/ in *axaljov-



infinite



prose chapters

- **introductory & background** chapters
 - romani population of east central europe
 - sociolinguistics of central romani
 - structure of central romani
- **feature** chapters
 - related to the individual feature maps (or a set of related feature maps)
- **summary** chapters
 - internal dialectological division of central romani
 - dialectological position of central romani within romani

feature chapters

1. comments on the extent of **attestation** of a given feature in the data
2. a list of the cross-dialectal **variants** of the feature
3. diachronic comments on the **origin and development** of the variants
4. comments on the **geographical distribution** of the variants in (and beyond) central romani
5. an historical linguistic **interpretation** of the cross-dialectal variation